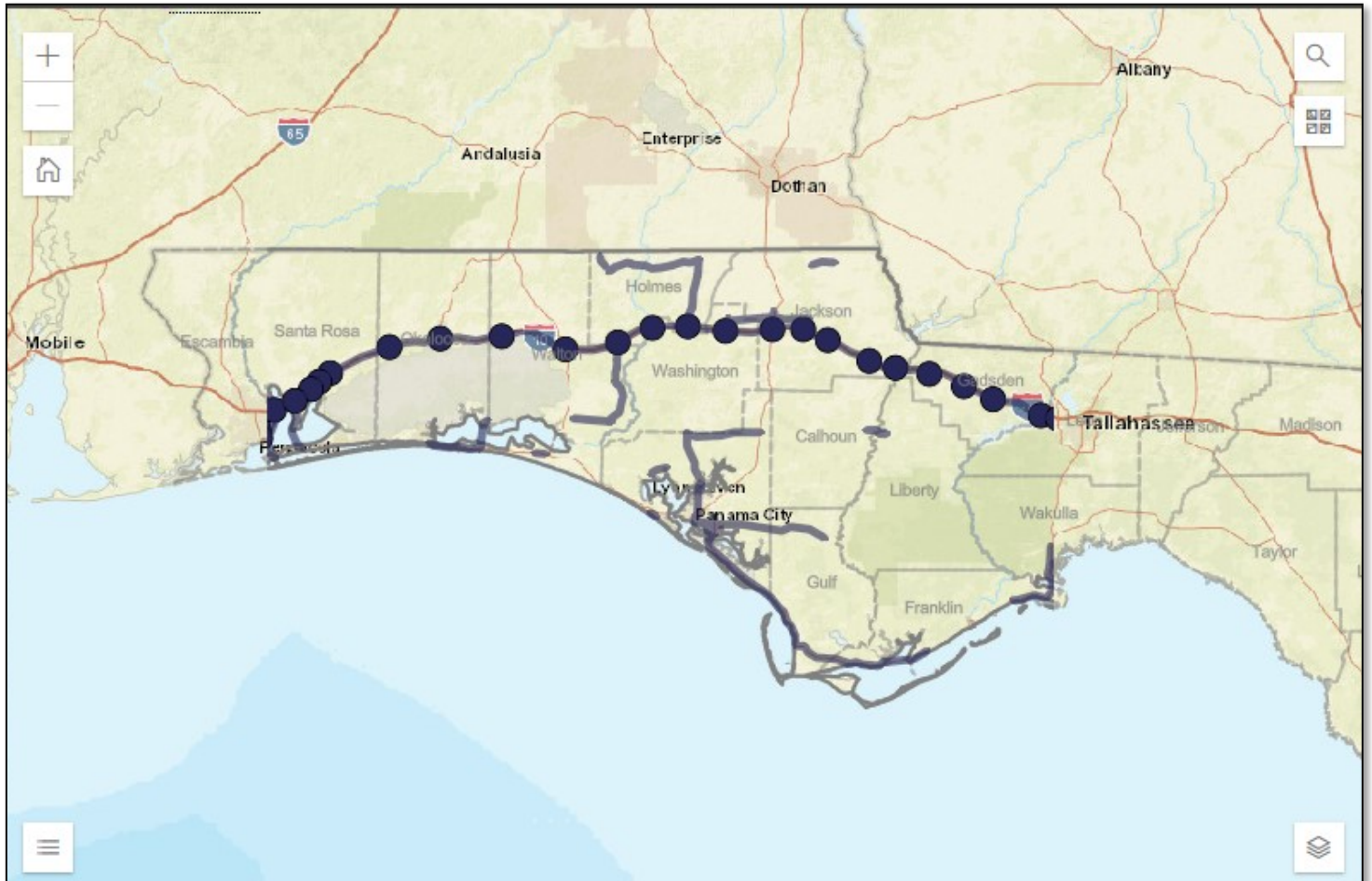




USER GUIDE



The Efficient Traffic Rerouting and Agency Coordination (ETRAC) is a web mapping application that provides a locational querying service for the official detour plans for District 3 Interstates and Bridges.

The application was created in 2019 utilizing the ESRI ArcGIS JavaScript API 4.x and ArcGIS Online for custom hosted feature layers. The application works best in Firefox and Chrome.

For more information about this application, please contact

Kenny Shiver

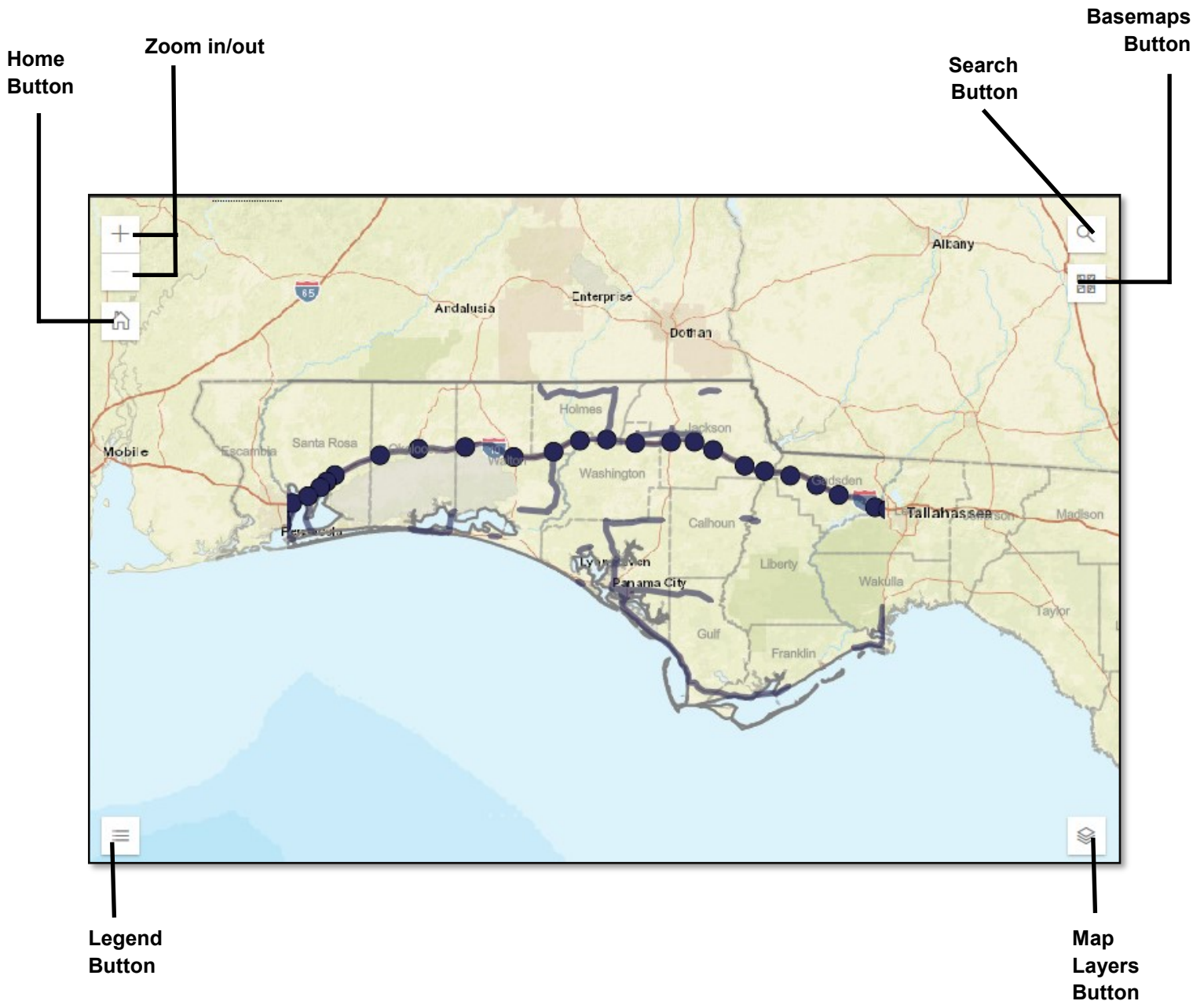
District 3 Arterial Management Specialist

Florida Department of Transportation

850-330-1589

Kenneth.Shiver@dot.state.fl.us

efficient Traffic Rerouting and Agency Coordination (eTRAC) Web Mapping Application



Home Button — Returns map view to District

Zoom in/out — Zooms map in or out

Search Button — Search by address

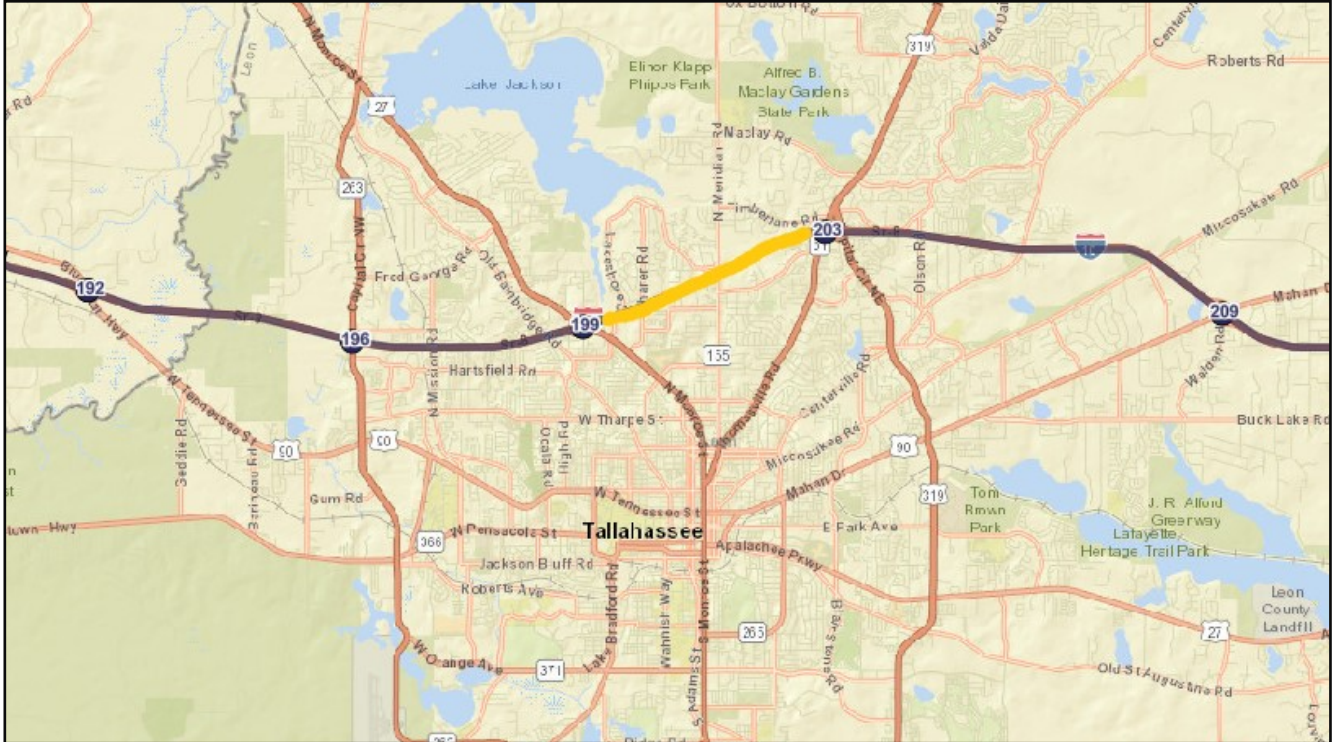
Basemaps Button — Allows user to select from a variety of basemaps

Legend Button — Displays visible layers on the map

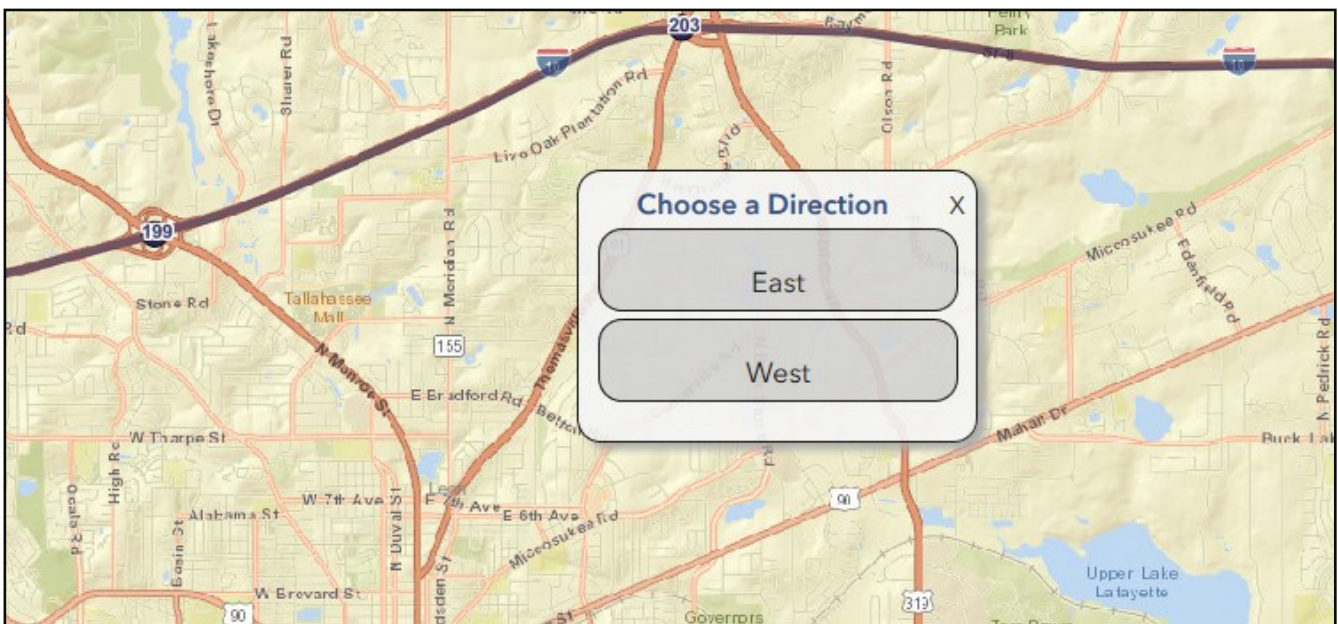
Map Layers Button — Turns on/off map Layers

How to Locate Detour Routes

Hover over roadway to see sections available.



Click Roadway to initiate detour route querying.

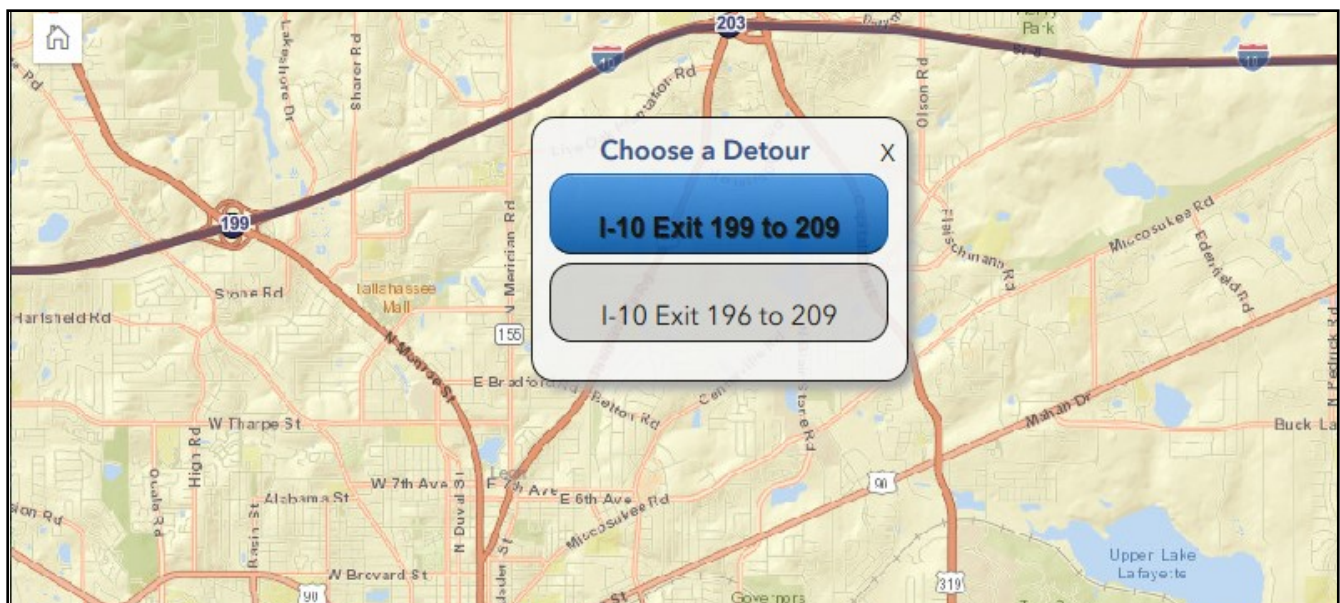


How to Locate Detour Routes

Click on the direction of the obstruction.

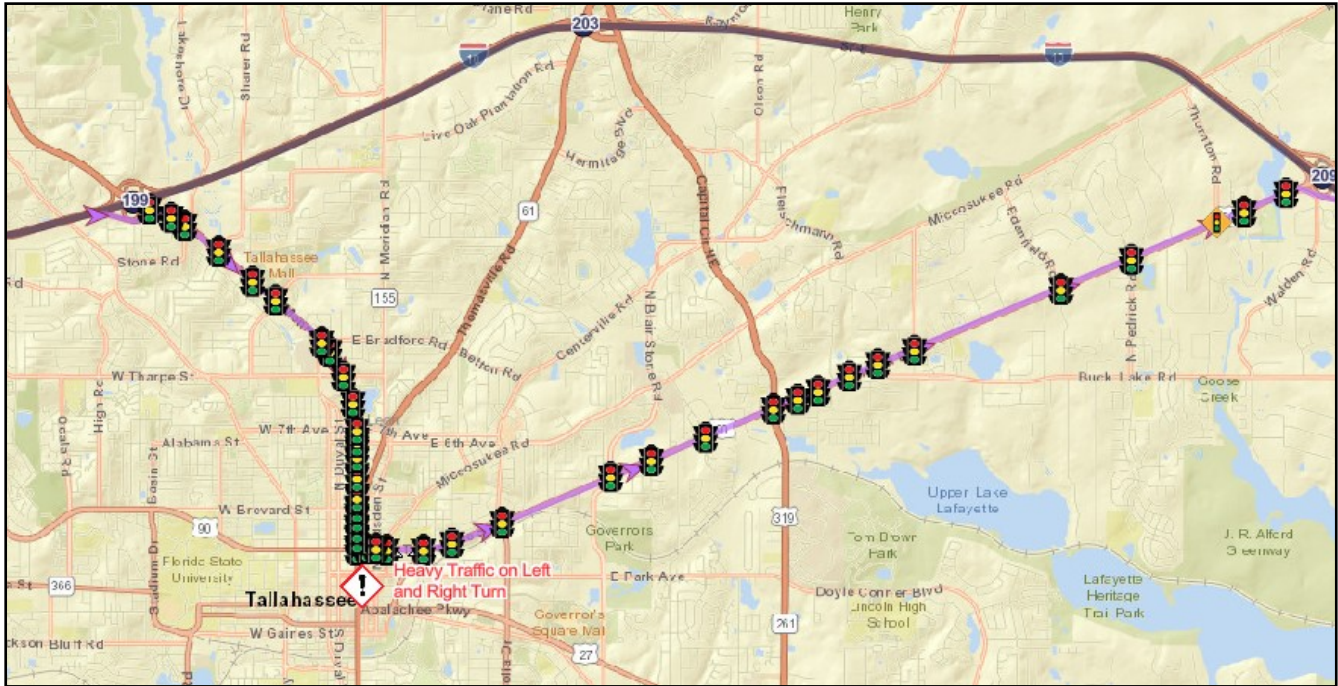


Where applicable, choose between detour options.

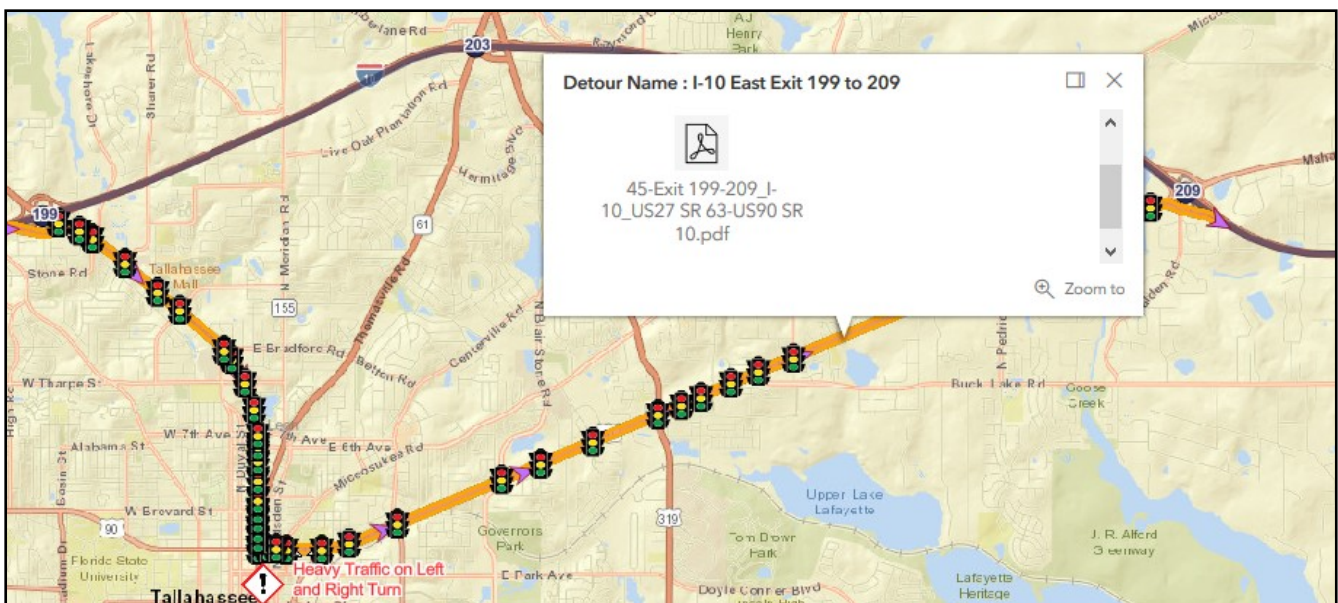


How to Locate Detour Routes

Map will zoom to and display detour route, direction of traffic flow, traffic devices on detour, and any applicable warnings.

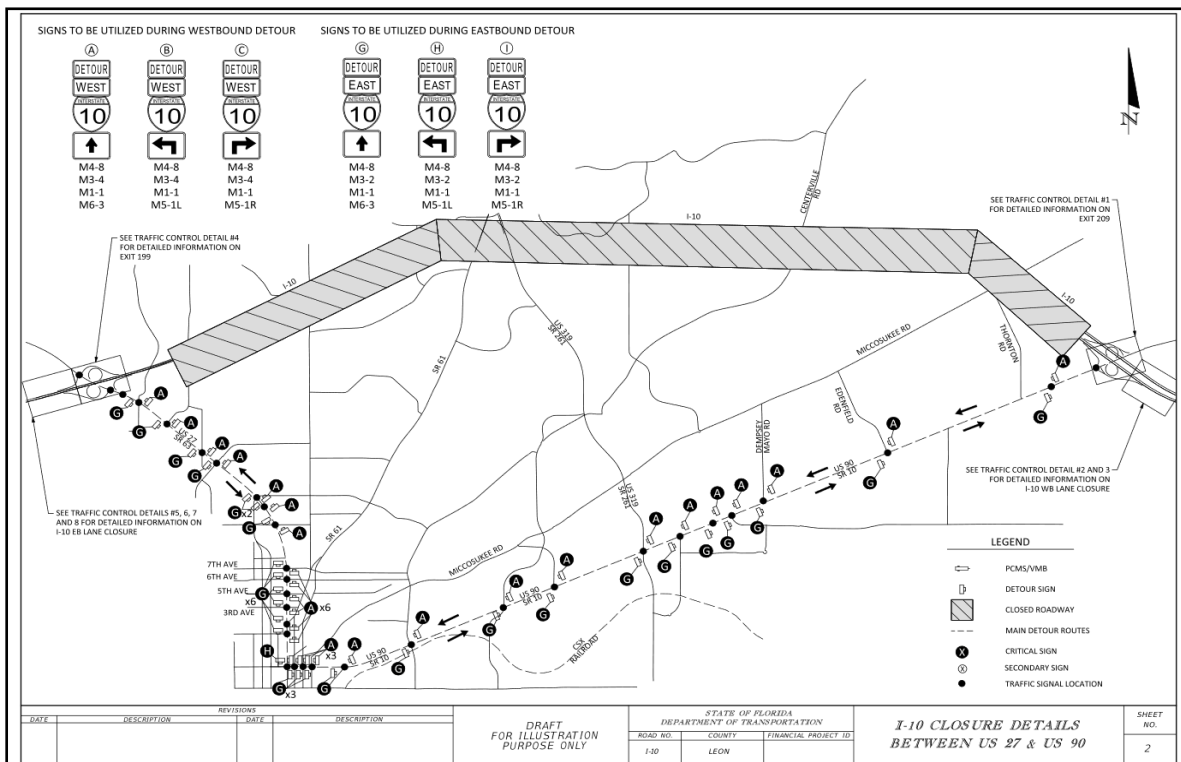
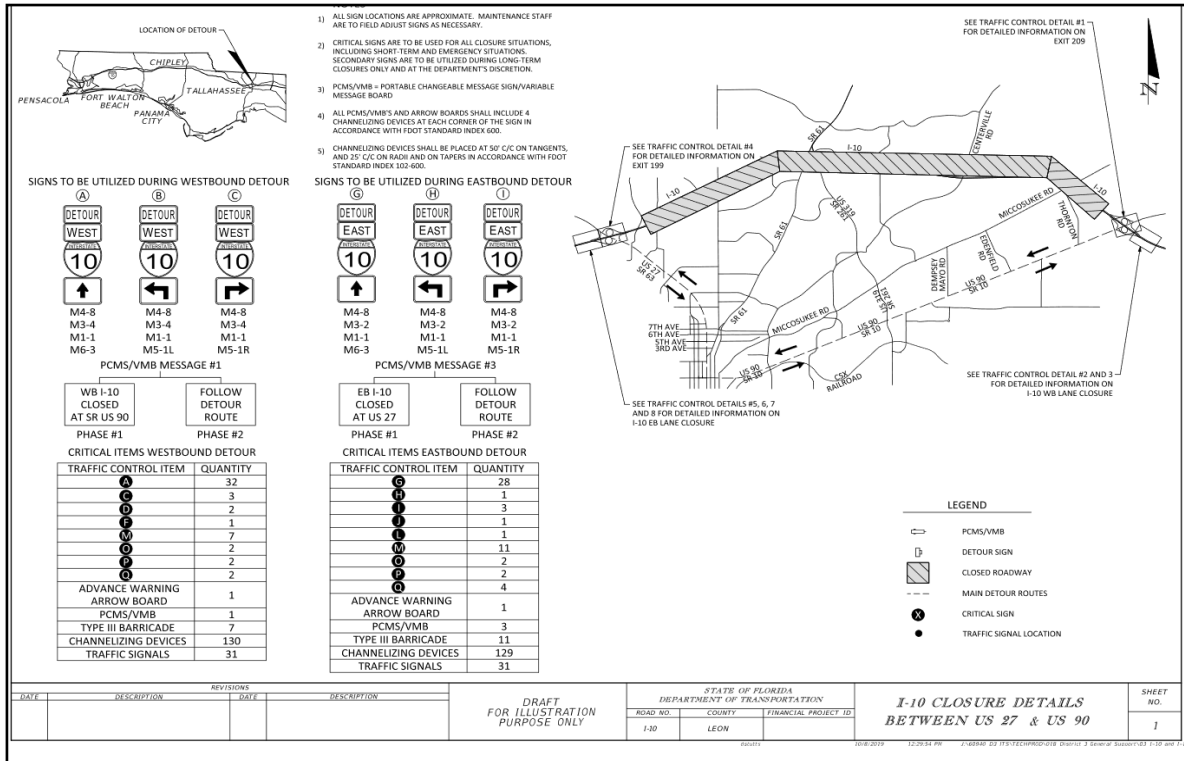


Click on detour to reveal detour plan link.



How to Locate Detour Routes

Detour plan will open in new browser tab.



D3 TIM Application

Layers in Application

Title / Location / Owner

- Interstates and Bridges - https://services1.arcgis.com/O1JpcwDW8sjYuddV/arcgis/rest/services/District3_Roadways/FeatureServer - FDOT
- District 3 Detours – https://services1.arcgis.com/O1JpcwDW8sjYuddV/arcgis/rest/services/TIM_Detours/FeatureServer - FDOT
- Restrictions <https://services1.arcgis.com/O1JpcwDW8sjYuddV/arcgis/rest/services/Restrictions/FeatureServer> - FDOT
- Interstate Exits – <https://services1.arcgis.com/O1JpcwDW8sjYuddV/ArcGIS/rest/services/Exits/FeatureServer/0> - FDOT
- Directional Arrows – <https://services1.arcgis.com/O1JpcwDW8sjYuddV/arcgis/rest/services/Arrows2/FeatureServer> - FDOT
- Traffic Signals With Direction– https://services1.arcgis.com/O1JpcwDW8sjYuddV/arcgis/rest/services/Signals_withName/FeatureServer - FDOT
- Traffic Devices <https://services1.arcgis.com/O1JpcwDW8sjYuddV/arcgis/rest/services/AllDistrict3Symbols/FeatureServer> - FDOT
- Active Construction Project - <https://services1.arcgis.com/O1JpcwDW8sjYuddV/arcgis/rest/services/ActiveConstructionProjects/FeatureServer> - FDOT
- Work Program - FY19 Adopted 2019 - <https://services1.arcgis.com/O1JpcwDW8sjYuddV/arcgis/rest/services/FY18Adopted2019/FeatureServer> - FDOT
- Work Program - FY19 Adopted 2020 - <https://services1.arcgis.com/O1JpcwDW8sjYuddV/ArcGIS/rest/services/FY18Adopted2020/FeatureServer/0> - FDOT
- Work Program - FY19 Adopted 2021 - <https://services1.arcgis.com/O1JpcwDW8sjYuddV/ArcGIS/rest/services/FY18Adopted2021/FeatureServer/0> - FDOT
- Work Program - FY19 Adopted 2022 - <https://services1.arcgis.com/O1JpcwDW8sjYuddV/ArcGIS/rest/services/FY18Adopted2022/FeatureServer/0> - FDOT

D3 TIM Application

Layers in Application

Title / Location / Owner

- Work Program - FY19 Adopted 2023 - <https://services1.arcgis.com/O1JpcwDW8sjYuddV/ArcGIS/rest/services/FY18Adopted2023/FeatureServer/0> - FDOT
- Rest Areas - <https://services1.arcgis.com/O1JpcwDW8sjYuddV/ArcGIS/rest/services/RestAreas/FeatureServer/0> - FDOT
- Fire Stations - https://services1.arcgis.com/Hp6G80Pky0om7QvQ/arcgis/rest/services/Fire_Stations/FeatureServer/0 - Homeland Security
- Helipad Locations - https://services1.arcgis.com/O1JpcwDW8sjYuddV/arcgis/rest/services/D3_Helipads/FeatureServer - FDOT
- Hospitals - https://services1.arcgis.com/CY1LXxl9zIJeBuRZ/ArcGIS/rest/services/Florida_Hospital_and_Emergency_Department_Facilities/FeatureServer/0 - Department of Health
- Schools - https://services1.arcgis.com/O1JpcwDW8sjYuddV/arcgis/rest/services/District3_AllSchools/FeatureServer FDOT
- Railroad Crossings - https://services1.arcgis.com/O1JpcwDW8sjYuddV/arcgis/rest/services/RHCI_03062018/FeatureServer/1 – FDOT
- Bridges - https://services1.arcgis.com/O1JpcwDW8sjYuddV/ArcGIS/rest/services/Bridges_TDA/FeatureServer/0 - FDOT
- Evacuation Routes - https://services2.arcgis.com/FiaPA4ga0iQKduv3/arcgis/rest/services/Hurricane_Evacuation_Routes/FeatureServer/0 - Esri Federal User Community
- Crossover Locations - https://services1.arcgis.com/O1JpcwDW8sjYuddV/arcgis/rest/services/I10_Crossover_Locations/FeatureServer - FDOT
- Road Ranger Facility Coverage - <https://services1.arcgis.com/O1JpcwDW8sjYuddV/arcgis/rest/services/RoadRangerFacilityCoverage/FeatureServer/0> – FDOT
- District Boundary - https://services1.arcgis.com/O1JpcwDW8sjYuddV/ArcGIS/rest/services/D3_Boundary/FeatureServer/0 - FDOT
- County Boundaries - https://services.arcgis.com/P3ePLMYs2RVChkJx/arcgis/rest/services/USA_Counties/FeatureServer/0 - esri Living Atlas
- Florida Highway Patrol Troop Boundary - https://services1.arcgis.com/O1JpcwDW8sjYuddV/arcgis/rest/services/FHP_Troops/FeatureServer/2 - FDOT

D3 TIM Application

Layers in Application

Title / Location / Owner

- Florida Emergency Management Regions - https://services.arcgis.com/ptvDyBs1KkcwzQNJ/arcgis/rest/services/Florida_EM_Region_Boundaries/FeatureServer/0 - TLCGIS
- City Boundaries - <https://services.arcgis.com/JMAJrTsHNLrSsWf5/arcgis/rest/services/FloridaCityBoundaries/FeatureServer/0> - FDEM
- FDLE Boundaries - <https://services1.arcgis.com/O1JpcwDW8sjYuddV/arcgis/rest/services/fdlebnd/FeatureServer> - FDOT
- FEMA - <https://hazards.fema.gov/gis/nfhl/rest/services/public/NFHL/MapServer/28> - FEMA
- Live Traffic Data - <https://utility.arcgis.com/usrvcs/servers/2b5a57c257634e89a67b5dfff8ed64a2/rest/services/World/Traffic/MapServer> - ESRI

Images in Application

Title/Location/Owner

- Restriction Icon <https://fdot.maps.arcgis.com/sharing/rest/content/items/73fe391b73154698ad9a7bea7fdb748d/data> - FDOT
- Helipad Icon <https://fdot.maps.arcgis.com/sharing/rest/content/items/4f5ae197c7db40f599b61bbc17b27db7/data> - FDOT
- Fire Department Signal Icon <https://fdot.maps.arcgis.com/sharing/rest/content/items/9a213e0053f44ff0beba50880569baf3/data> - FDOT
- Traffic Signal Icon <https://fdot.maps.arcgis.com/sharing/rest/content/items/92593baacf494319a20e549cfb000bfd/data> - FDOT
- Pedestrian Flashing Beacon Icon - <https://fdot.maps.arcgis.com/sharing/rest/content/items/caa9643c8ca147d9abb3d1facaf686f2/data> - FDOT
- Interconnected Monitored Traffic Signal - <https://fdot.maps.arcgis.com/sharing/rest/content/items/8a003931fd43475098c6de17cadf3296/data> - FDOT
- Traffic Warning Beacon Icon- <https://fdot.maps.arcgis.com/sharing/rest/content/items/71f7cb040d0c4faeb7b4cc87e0f6fc51/data> - FDOT
- Intersection Control Beacon Icon - <https://fdot.maps.arcgis.com/sharing/rest/content/items/73ea32625f0240d4ba5d7ff08c81e823/data> - FDOT
- Speed Activated Warning Device - <https://fdot.maps.arcgis.com/sharing/rest/content/items/fb7f6725ce9a462388dcc875c7524d27/data> - FDOT